

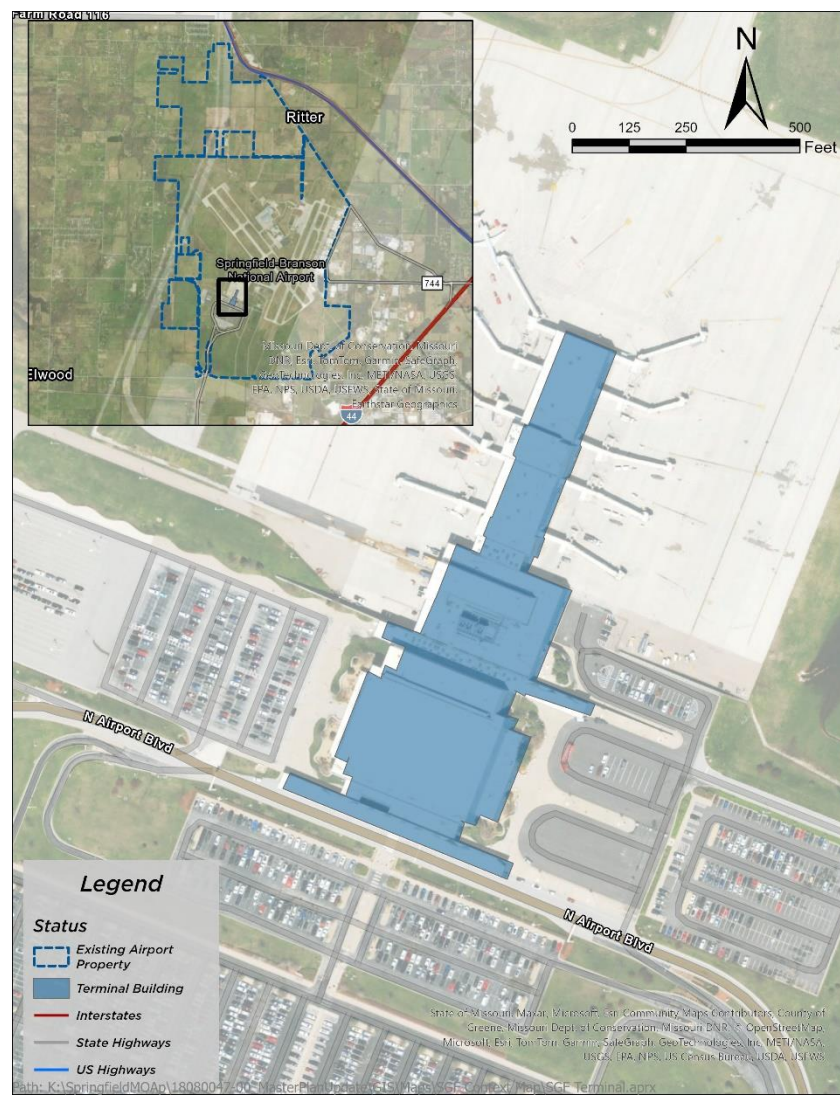
Chapter Two

Terminal Area Inventory

2.1 Passenger Terminal and Facilities

The terminal building opened in May 2009 and is located at the southwest corner of the airport property, west of intersecting Runways 14-32 and 02-20, as depicted in **Exhibit 2.1-1**. The total area of the three-level building is approximately 289,560 square feet, as summarized in **Table 2.1-1**. The following sections describe the terminal, associated concourse, and various passenger processing and Transportation Security Administration (TSA) functions.

Exhibit 2.1-1: Terminal Area



Source: CMT 2022

Table 2.1-1: Passenger Terminal Gross Area

LEVEL	TERMINAL	CONCOURSE	TOTAL (SF)
Apron	75,523	27,102	102,625
Main	116,713	46,843	163,556
Upper	19,932	6,295	26,227
Total (sf)	212,168	80,240	292,408

Source: Alliance (2022)

2.1.1 Terminal

The Terminal provides approximately 212,170 square feet on three levels:

- **Apron Level** = Airline and Airport operations
- **Main Level** = Passenger arrival and departure processing functions
- **Upper Level** = Mechanical, Electrical, Plumbing, and Communications/IT

Table 2.1-2 provides a space allocation summary by level.

Table 2.1-2: Passenger Terminal Space by Level

AREA	APRON LEVEL	MAIN LEVEL	UPPER LEVEL	TOTAL (ft ²)
Public Space				
Circulation ¹	-	39,484	-	39,484
Ticket Lobby Queue	-	2,155	-	2,155
TSA Passenger Security Screening & Offices	-	15,221	-	15,221
Baggage Claim (retrieval, device, meeter & greeter)	-	14,397	-	14,397
Restrooms, SARA, Nursing Mothers (pre/post-security)	-	2,393	-	2,393
Other (information, displays) ²	-	1,687	-	1,687
<i>Subtotal (ft²)</i>	-	75,337	-	75,337
Airline Space				
Ticketing (counter, ATO)	-	7,086	-	7,086
TSA Outbound Baggage Screening	3,139	-	-	3,139
Inbound Baggage Claim Laydown	8,576	-	-	8,576
Inbound/Outbound Baggage Circulation ³	26,870	-	-	26,870
Baggage Service Offices (BSO)	-	268	-	268
<i>Subtotal (ft²)</i>	38,585	7,354	-	45,939
Concessions				
F&B/Retail (BOH, Storage)	-	4,341	-	4,341
Rental Car ⁴	-	5,717	-	5,717
<i>Subtotal (ft²)</i>	-	10,058	-	10,058
Non-Public Space				
Non-Airline Tenant Space ⁵		1,979	-	1,979
Airport Administration	-	12,768	-	12,768
Restrooms/Circulation	3,790	2,198	227	6,215
Airport Operations ⁶	14,289	2,166	-	16,455
Building Systems (MEP, Communications/IT, Structure)	18,859	4,853	19,705	43,417
<i>Subtotal (ft²)</i>	36,938	23,964	19,932	80,834
Total Gross Area (ft²)	75,523	116,713	19,932	212,168

Note: Totals are based on areas measured to the inside edge of exterior walls and center of interior walls, rounded to the nearest square foot.

1/Includes public seating, ticketing, concourse, bag claim, and general circulation

2/Includes Global Entry Enrollment Center, US Mail Drop, and Meditation suite

3/Includes cart staging, storage, and GSE circulation

4/Includes rental car counters, queues, and associated offices

5/Includes Airport Police, mail, and evidence process rooms

6/Includes maintenance, janitorial, storage, and shops

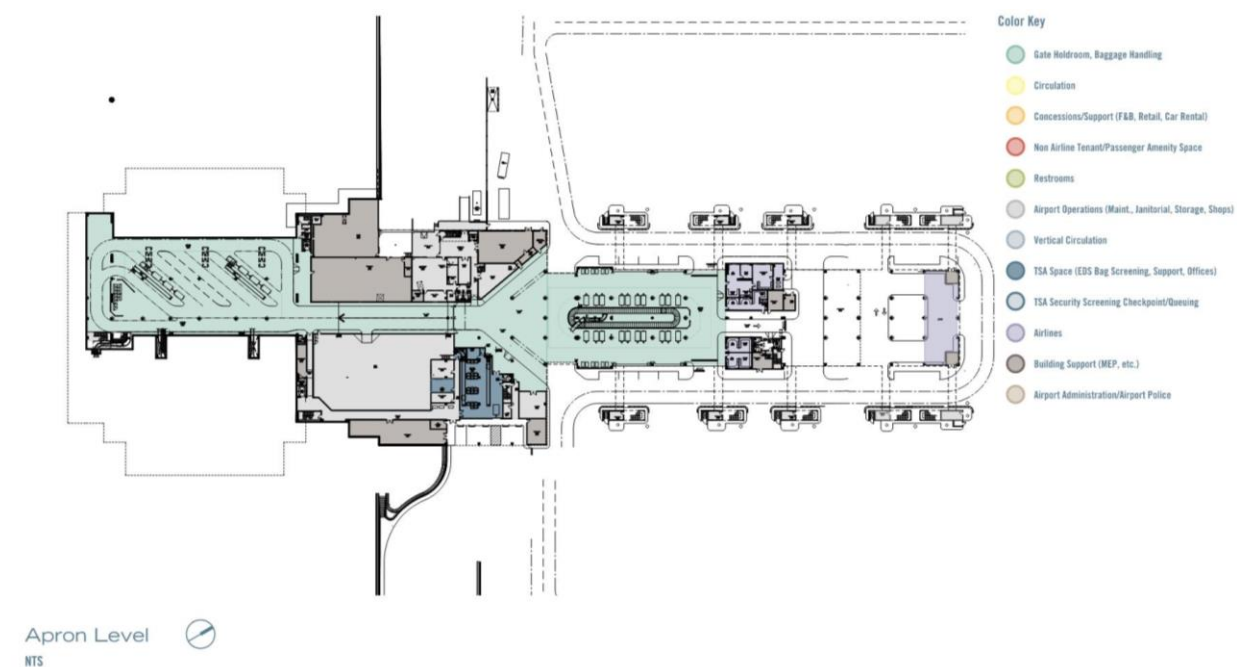
Source: Alliance (2022)

The Apron Level, as depicted in **Exhibit 2.1-2**, consists of all the areas associated with the non-public airline and airport operational support spaces and the TSA baggage screening functions. The south portion of the terminal includes the site devoted to baggage laydown consisting of two 40-foot conveyor piers with room for a future third pier located between the two.

A TSA baggage screening room to the north includes one CT-80 and one CT-80XL EDS unit and associated office space. A recent upgrade in May 2022 allows for automated screening of oversized baggage, such as golf bags. Inbound baggage laydown is accessed via the east and west GSE vehicle service roads (VSR), entering the midpoint of the terminal just after baggage makeup.

Additional support spaces include cart storage, mechanical/electrical/plumbing (MEP), janitorial rooms, maintenance-related workshops, storage, offices, shipping and receiving area and its related loading dock, and non-public restrooms and circulation corridors.

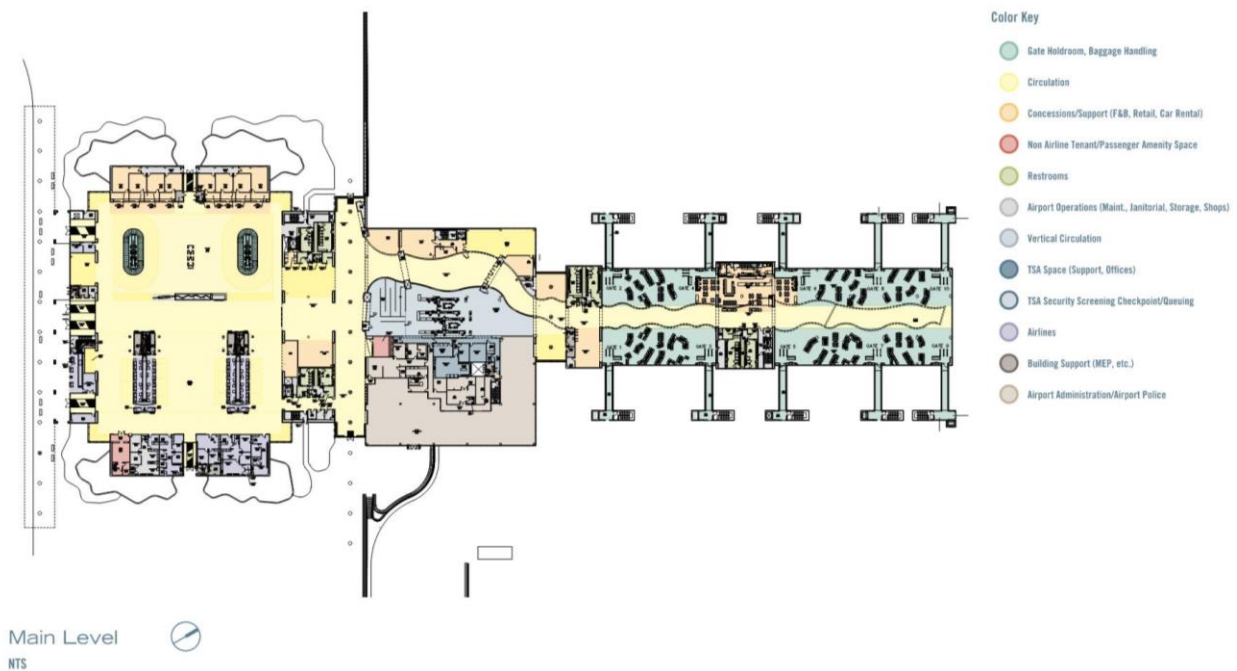
Exhibit 2.1-2: Terminal & Concourse Areas – Apron Level



Source: Alliance (2022)

The Main Level depicted in **Exhibit 2.1-3** includes all the passenger processing functions, including ticketing and baggage claim, TSA passenger screening, concessions and rental car offices, airline offices and support space, airport administration, restrooms, and gate holdrooms. Additional areas include airport police, a meditation room, a Global Entry Enrollment Center, US mail drop, a nursing mother's suite, numerous public seating areas including a meet and greet area, and an outdoor Service Animal Relief Area (SARA).

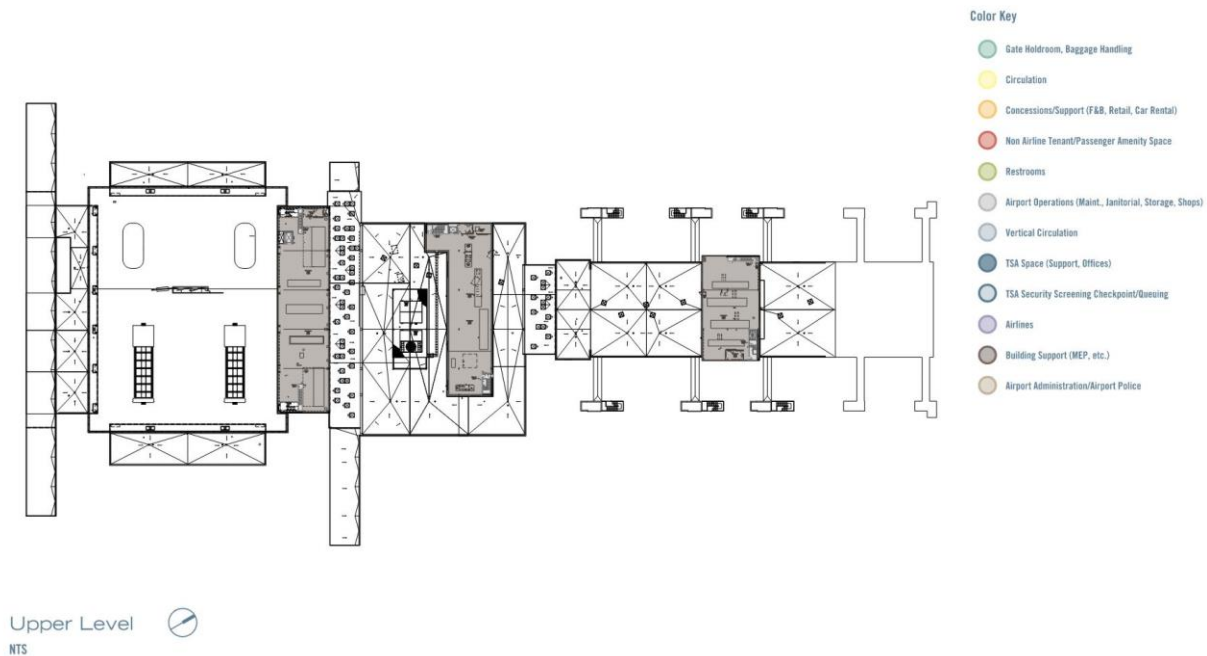
Exhibit 2.1-3: Terminal & Concourse Areas – Main Level



Source: Alliance (2022)

The Upper Level, as depicted in **Exhibit 2.1-4**, includes three large mechanical rooms, a single electrical room in each space, and roof access. One area is above the main terminal area, one above the TSA passenger screening area, and one spans the central concession and restroom node. Access for each location is by stairs and elevator.

Exhibit 2.1-4: Terminal & Concourse Areas – Upper Level



Source: Alliance (2022)

TICKETING

Ticketing functions are located on the east side of the terminal lobby, providing full-service airline agent positions and self-service devices (SSDs) to support the check-in process for passengers and their baggage. There are 28 agent counter positions, nine currently vacant, and eight SSDs for 36 possible check-in positions at two ticketing islands. The location and number of positions occupied by each airline are tabulated in **Table 2.1-3**. Each ticket island's baggage conveyor feeds the TSA baggage screening room on the Apron level. Ticketing queues extend 12 feet from the face of the existing counters.

TSA PASSENGER SECURITY SCREENING

The three-lane security screening checkpoint (SSCP) is adjacent to the Airport Administrative offices just north of the terminal lobby and near the head of the airside concourse. The area currently consists of two standard lanes with one walk-through metal detector (WTMD), one Smiths CT X-ray, one Smiths AT2 X-ray, and one Advanced Imaging Technology (AIT) body scanner. The third lane provides access for TSA PreCheck passengers consisting of one WTMD and one Smiths AT-2 X-ray.

Table 2.1-3: Ticketing Check-in Summary

AIRLINE	AGENT	SSD	TOTAL
North Island			
Delta	4	4	8
United	2	21	4
Vacant	8	-	8
Subtotal	14	6	20
South Island			
American	8	2	10
Allegiant	3	-	3
Charter	2	-	2
Vacant	1	-	1
Subtotal	14	2	16
Total	28	8	36

Notes: Airline agreements are Non-Signatory with Allegiant on a month-to-month basis per lease agreement termination dates provided by the Airport.

1/United SSDs are located at the agent ticket counter

Source: Alliance (2022)

BAGGAGE CLAIM

The baggage claim area is on the terminal lobby's west side, opposite the check-in islands. There are two slope bed carousels providing a total of approximately 232 linear feet of claim frontage. Each device offers about 116 linear feet of claim frontage oriented parallel to the curb front. Additional space is provided between the current devices for a future third device of equal length. Currently, this space is being utilized for the Sky Gallery art exhibit.

Inbound baggage delivery is located directly below baggage claim on the Apron Level, as previously described. Unclaimed or late arriving baggage is stored in each airline's ATO office or American's baggage service office (BSO) adjacent to the baggage claim area.

2.1.2 Concourse

The double-loaded linear airside concourse comprises ten gates north of the terminal headhouse. Each gate includes a short glass-enclosed "fixed" link with a downward-sloping floor containing stairs, a baggage elevator, and a passenger boarding bridge (PBB). The airside or post security area consists of two food and beverage areas (F&B), one before Gate 2 and one between Gate 4 and Gate 6. A news and retail location is located adjacent to Gate 1. Two sets of men's and women's restrooms are also found post security, one adjacent to Gate 2 and one between Gate 3 and Gate 5. The concourse space allocation is tabulated in **Table 2.1-4**. All ten gates are operated on a common-use basis where

no gate is assigned or leased to a particular airline. However, digital signage is provided at each gate for the four airlines. A summary of aircraft parking capabilities, PBB, and typical airline gate assignments is provided in **Table 2.1-5**.

Table 2.1-4: Concourse Space by Level

AREA	APRON LEVEL	MAIN LEVEL	UPPER LEVEL	TOTAL (ft ²)
Public Space				
Circulation ¹	-	16,266	-	16,266
Passenger Gate Holdrooms	-	19,708	-	19,708
Restrooms, SARA, Nursing Mothers (post-security)	-	2,595	-	2,595
Subtotal (ft ²)	-	38,569	-	38,569
Airline Space				
Outbound Baggage Makeup	9,989	-	-	9,989
Airside Operations/Storage	3,138	22	-	3,160
Inbound/Outbound Baggage Circulation ²	6,981	-	-	6,981
Other Offices/Support Space (DGS)	2,778			2,778
Subtotal (ft ²)	22,886	22	-	22,908
Concessions				
F&B/Retail (BOH, Storage)	-	5,997	-	5,997
Subtotal (ft ²)	-	5,997	-	5,997
Non-Public Space				
Restrooms/Circulation	385	519	-	904
Airport Operations ³	1,409	621	-	2,030
Building Systems (MEP, Communications/IT, Structure)	2,422	1,115	6,295	9,832
Subtotal (ft ²)	4,216	2,255	6,295	12,766
Total Gross Area (ft²)	27,102	46,843	6,295	80,240

Note: Totals are based on areas measured to the inside edge of exterior walls and center of interior walls, rounded to the nearest square foot.

1/Includes public seating, concourse, PBB fixed links, and general circulation

2/Includes cart staging, storage, and GSE circulation

3/Includes maintenance, janitorial, storage, and shops

Source: Alliance (2022)

2.1.3 Aircraft Apron Parking Area

The terminal area contains approximately 19 acres of apron space for aircraft parking and maneuvering around the concourse. The apron accommodates aircraft ranging from Narrowbody (B737/A320) to Medium Regional aircraft (CRJ, ERJ). The 10 PBBs serve 13 aircraft parking positions. Gate 9 contains an additional parking lead-in line, "9, A," with its PBB able to swing to each parking position. Gate 10 includes two additional parking lead-in lines, "10A" and "10B," with the ability to turn the PBB to each parking position. An FAA Aircraft Design Group (ADG) IV taxiway runs the concourse aircraft parking area's perimeter and is accessed via Taxiway "F" to the north and Taxiway E to the east. **Exhibit 2.1-5** depicts the existing aircraft apron parking plan.

Table 2.1-5: Aircraft Parking and Gate Summary

GATE	TYPICAL AIRLINE	LARGEST AIRCRAFT		PBB ²		
		ADG	AIRCRAFT ¹	MANUFACTURER	MODEL NO.	INSTALLED YEAR
1	Delta	III	SNB	ThyssenKrupp	TB 41/19.5-3	2008
2	Allegiant	III	NB	ThyssenKrupp	TB 41/24.5-2	2008
3	Delta	III	LR	Jetway	A3-58/110-125R	1998
4	Allegiant	III	NB	ThyssenKrupp	TB 41/24.5-2	2008
5	United	II	MR	Jetway	SA2-91/125-125R	2006
6	American	III	LR	Jetway	A2-65/99-125R	2006
7 ³	United	III	NB	Jetway	A3-48/86-125R	2006
8	American	III	LR	Jetway	AD2-65/99-125R	2001
9 ⁴	United	III	NB	ThyssenKrupp	TB 41/19.5-3	2008
10 ⁵	American	III	LR	ThyssenKrupp	TB 41/19.5-3	2008

Notes:

1/MR = Medium Regional, LR = Large Regional, SNB = Small Narrowbody, NB = Narrowbody

2/PBB information per the Airport

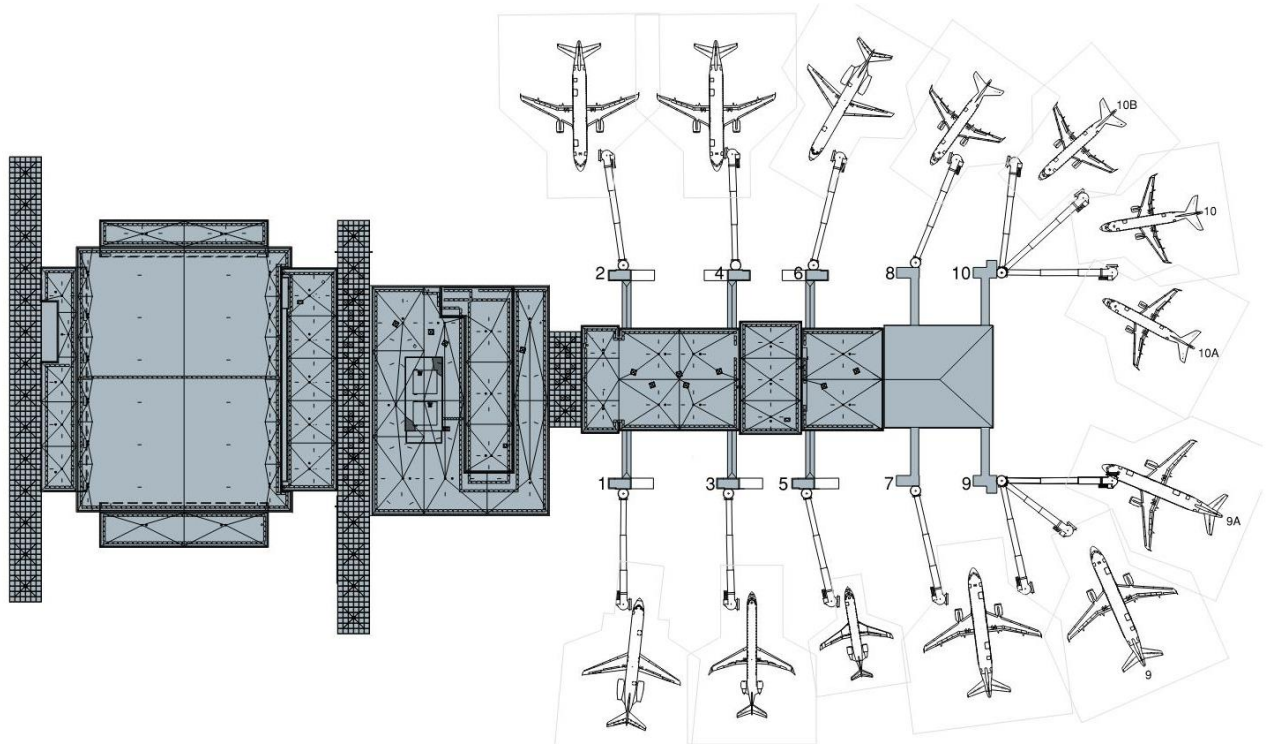
3/Gate 7 accommodates a 757 with restrictions to the adjacent gates

4/Gate 9 includes position 9A; both accommodate a 757 with restrictions to adjacent gates

5/Gate ten includes positions 10B and 10C

Source: Alliance (2022)

Exhibit 2.1-5: Existing Apron



Apron Parking Plan 
NTS

Source: Alliance (2022)
